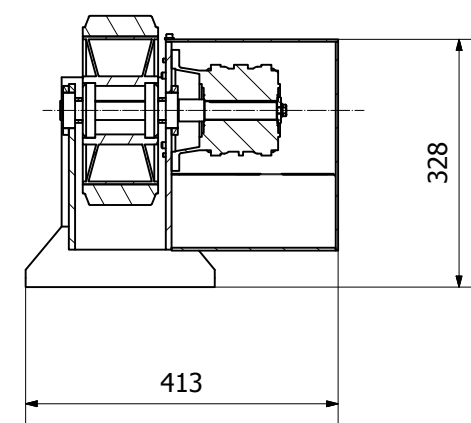
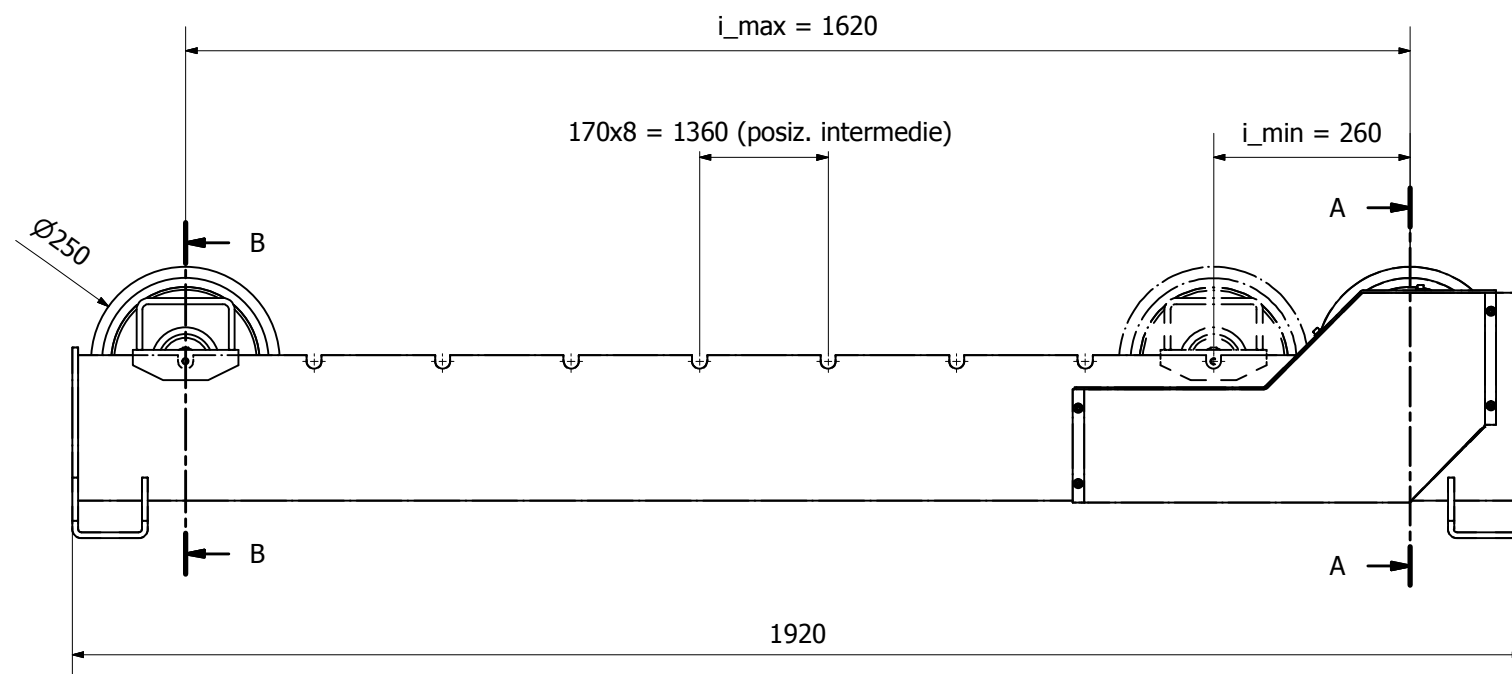
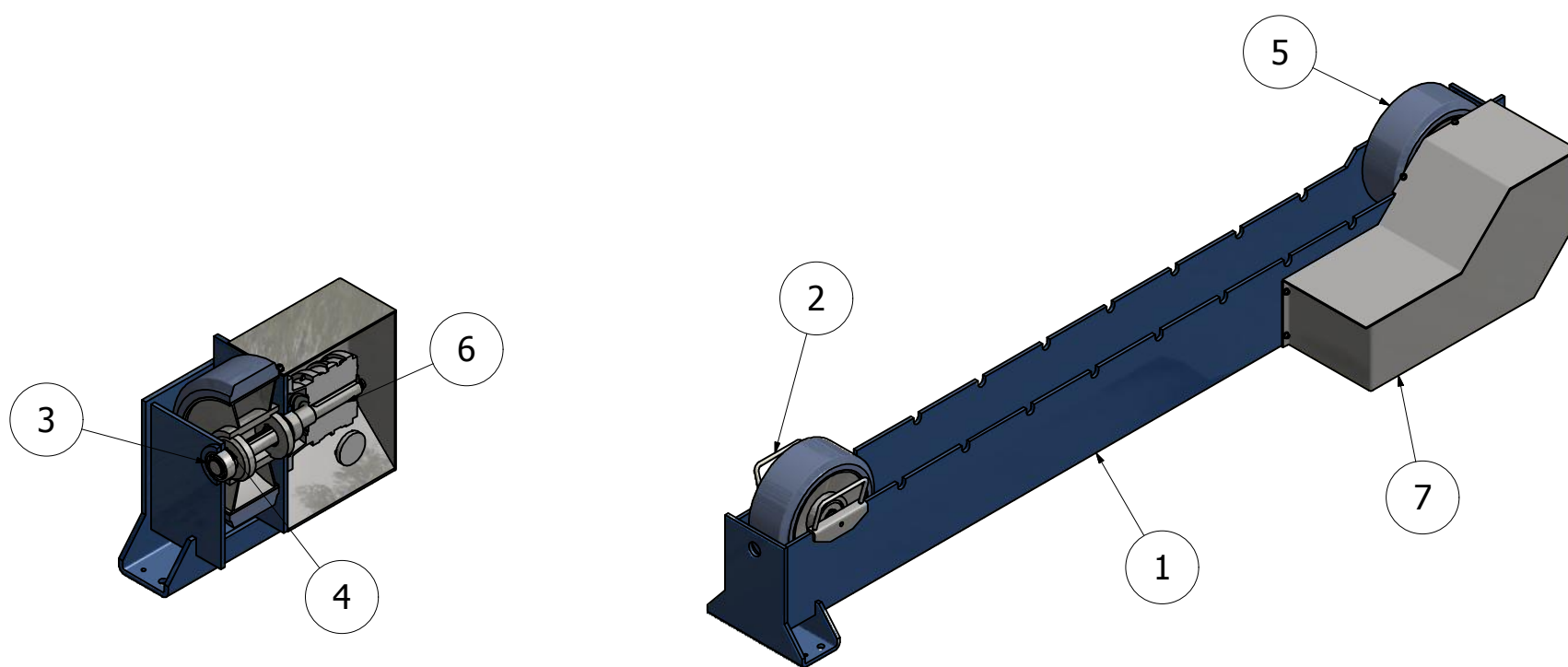
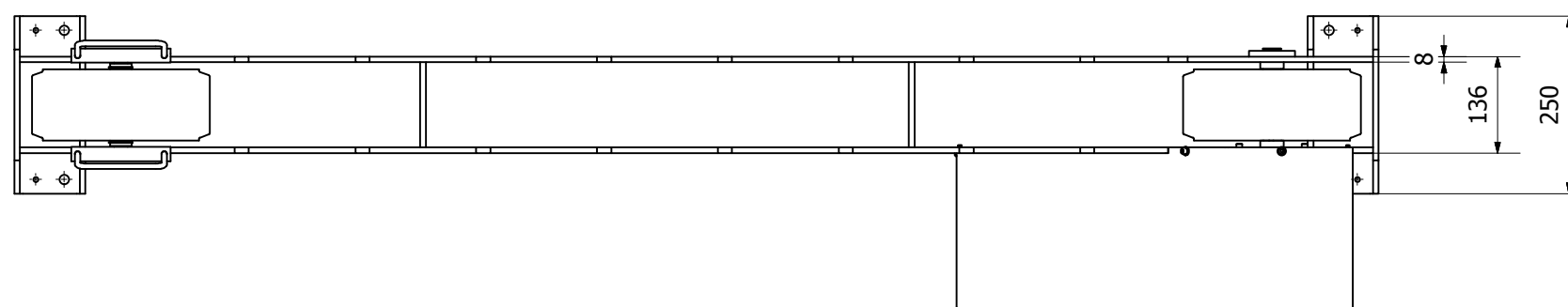


sez. B-B



sez. A-A



7	carter motore	1	10 kg	P2012010
6	albero motore	1	1 kg	P1902000
5	ruota saldata	1	9 kg	P2002010
4	distanziale albero motore	2	0 kg	P1902004
3	SKF 63005-2RS1	2	0 kg	
2	assieme ruota folle	1	10 kg	P1902000
1	struttura motrice lavorata	1	58 kg	P1901000
Pos.	Denominazione	n° pezzi	Peso	Rif. Disegno

Data:	Materiale:	Peso:	Dis:	PR 20
15/01/2013		102 kg	M.Golin	

Denominazione: PR20 motrice	Scala: 1:10
-----------------------------	-------------

SARTORE SRL welding positioners	Dis. n°: P1900100	A3
---	-------------------	-----------